

OL 700-10

Programmable Precision Power Supply for LEDs

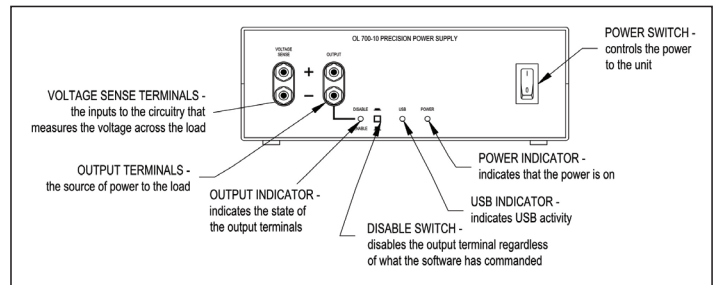
The OL 700-10 Programmable Precision Power Supply offers a lower cost solution to accurately controlling the drive currents of LEDs and small incandescent sources. It is completely controlled by a remote computer via a USB interface.

The OL 700-10 can be configured to run in current or voltage regulated modes with programmable over current and voltage limits. The control program gives full remote access to the current source setting. Active X[™] is also provided for custom programming.

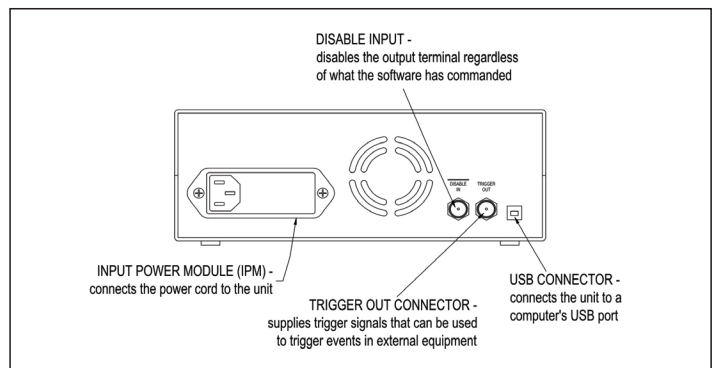
Control of the OL 700-10 is integrated into the application software of the OL 770-LED spectroradiometer to provide a total measurement package, incorporating remote switching and time setting. The OL 700-10 is also available as a stand-alone power supply and comes complete with all necessary software controls for USB interface.



OL 700-10 FRONT PANEL



OL 700-10 REAR PANEL



For more information visit Optronics.com

| SPECIFICATIONS | |
|-------------------------------------|--|
| Current Source / Measure Range | |
| OL 700-10-2000 | ± 2000 mA |
| OL 700-10-200 | ± 200 mA |
| OL 700-10-50 | ± 50 mA |
| Current Source/ Measure Resolution | |
| OL 700-10-2000 | 0.1 mA |
| OL 700-10-200 | 0.01 mA |
| OL 700-10-50 | 0.0025 mA |
| Current Source / Measure Accuracy | 0.02% of Full Scale |
| Voltage Source / Measure Range | ± 6.0 Volts |
| Voltage Source / Measure Resolution | 0.3 mV |
| Voltage Source / Measure Accuracy | 0.02% of Full Scale |
| Size | 10" x 6.5" x 3.8" (25.4 cm x 16.5 cm x 9.65 cm) |
| Weight | 5 lbs. (2.2 kg) |
| Operating Temperature | 0° – 40°C (32°-100°F) |
| Operating Humidity | 0 - 90% Non-condensing |
| User Interface | Virtual Interface via PC, USB Connection |

Data Sheet: B095 Dec 2020 | Rev A

As part of our policy of continuous product improvement, we reserve the right to change specifications at any time.