

# OL 770 TEST AND MEASUREMENT SYSTEM SAMPLE REPORTS

Modern high-speed spectroradiometers can now generate large volumes of data in a fraction of a second. The benefits of these powerful instruments would soon be lost if the data could not be stored and presented in a convenient form. One of the powerful features of the OL 770 application software is its ability to export both the spectral data and the calculated values into a choice of custom report templates or spreadsheets.

This sample Test Report Sheet was created using a Microsoft® Word template.

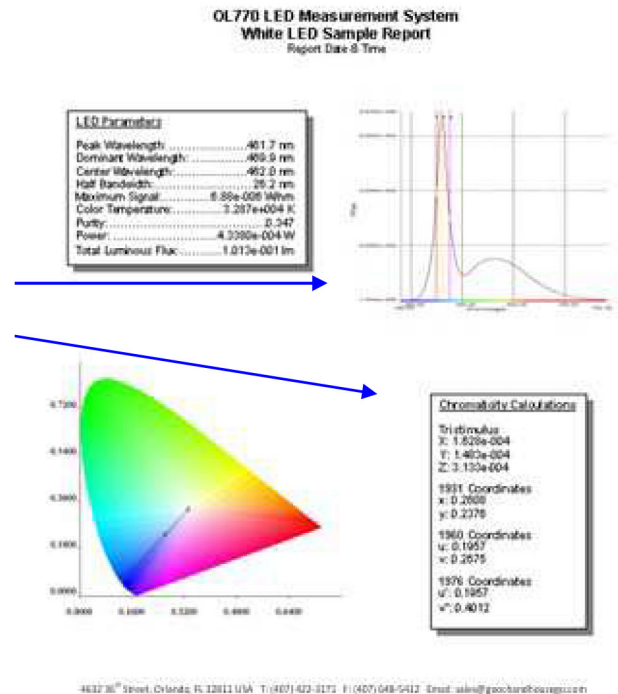
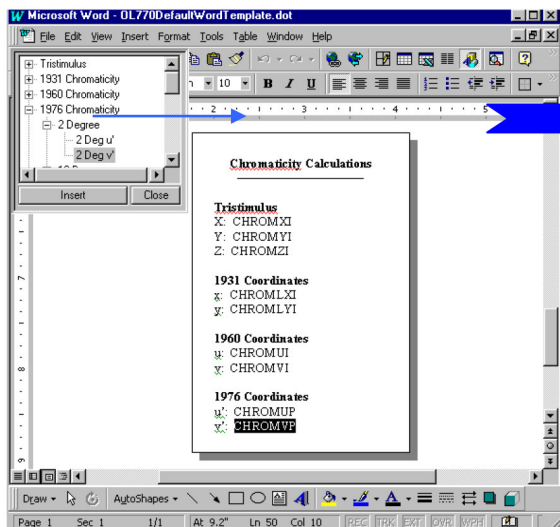
Take a measurement, then click on the Word icon on the OL 770 application tool bar to open the Word template and automatically insert the test data values and graphs.

- LED spectral values
- Total spectral flux plot with peak wavelength and bandwidth cursors
- Chromaticity values
- 1931 or 1976 CIE chromaticity plots with line to dominant wavelength

## WORD TEMPLATE BUILDER

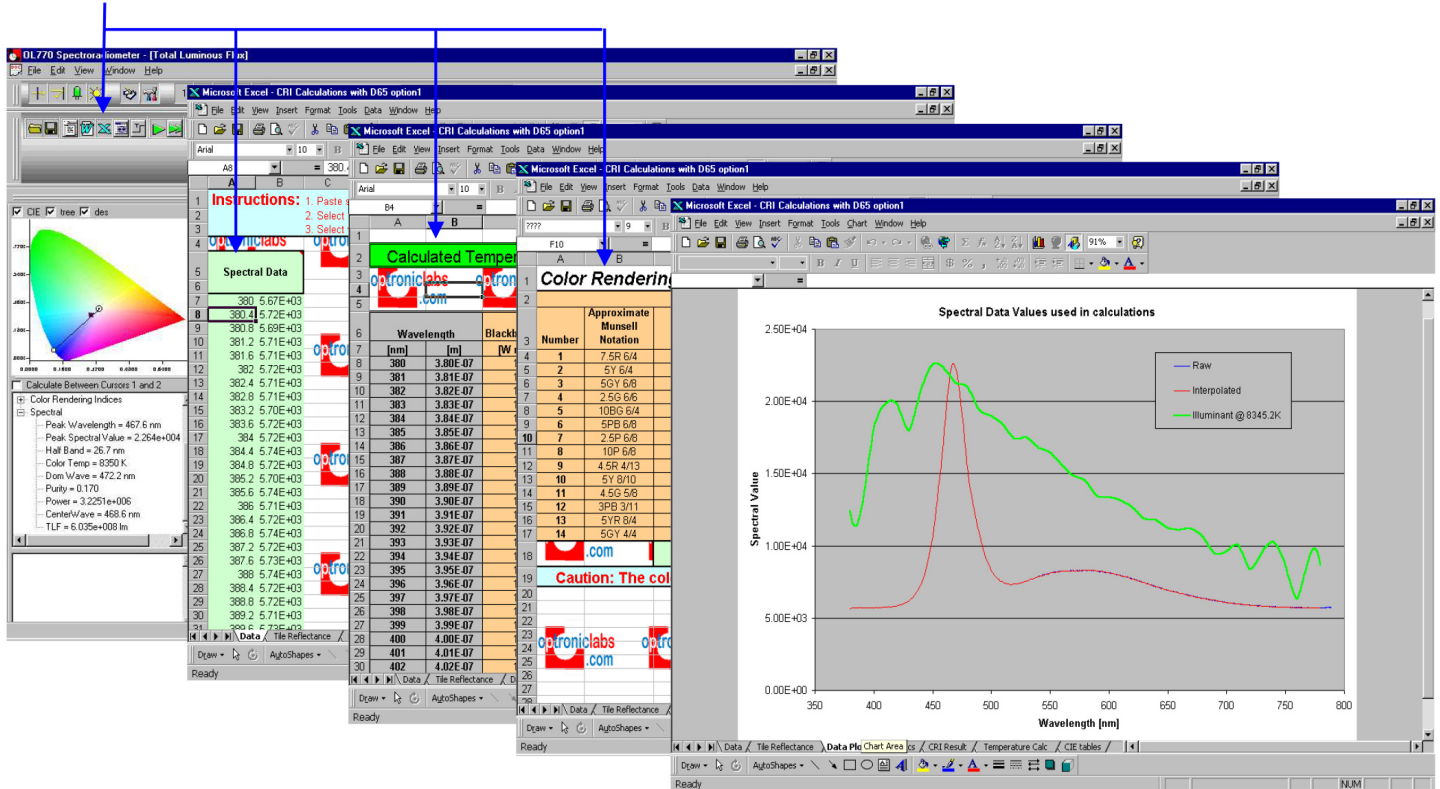
The OL 770 application software includes a Word Template Builder to facilitate the creation of the Microsoft® Word templates. Open your Word document using the Template Builder button on the toolbar, and insert the Text Macro representing the calculated values, spectral, polar, and CIE plots or the file name.

Insert data from the value tree to add a Text Macro to your Word template.



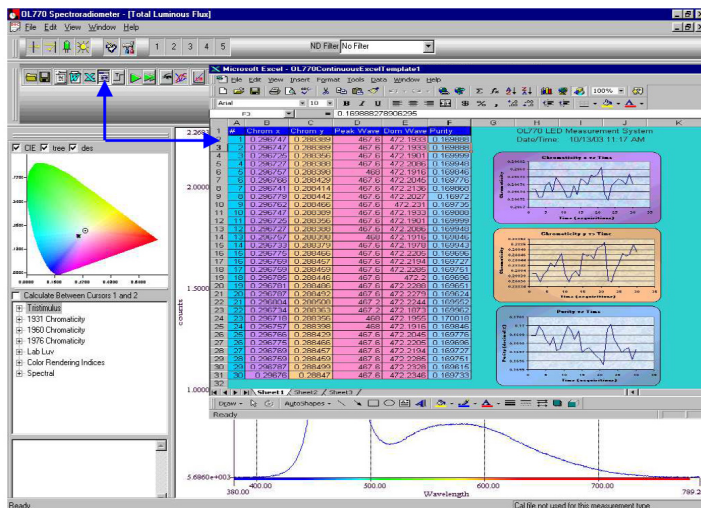
## EXPORT SPECTRAL DATA INTO COMPLEX CUSTOM MICROSOFT® EXCEL SPREADSHEET TEMPLATES

Create your own spreadsheet, and use the OL 770 application software to link to it. Open the spreadsheet, and export the spectral data at the click of a button.



## CONTINUOUS VALUE DATA REPORT

The OL 770 application software can also send any or all of nearly one hundred calculated values (*chromaticity, color rendering, photometric, radiometric, and cursor values*) to an Excel spreadsheet. The continuous value data report can be used to record values from hundreds of measurements into one spreadsheet for statistical analysis or data logging.



## SAVE FILE FORMATS

The measurement data can be automatically saved in any of three file formats:

- XXX.OLI OL 770 data file in ASCII text, which also includes the system configuration details
- XXX.DOC Word document created from your selected Word template with measurement data inserted
- XXX.XLS Excel spreadsheet created from your template with the spectral data included

**OPTRONIC**  
LABORATORIES

Information Sheet: IS35 Jan 2019

As part of our policy of continuous product improvement, we reserve the right to change specifications at any time.

For more information visit [OptronicLabs.com](http://OptronicLabs.com) or contact [Info@OptronicLabs.com](mailto:Info@OptronicLabs.com)